

When planning your workshop several factors should be taken into consideration including student workplaces, tool storage units, machinery, services, exits and so forth.

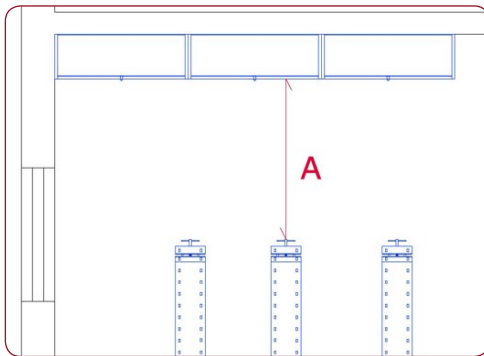
The needs of safety, freedom of movement and easy supervision should find a good balance in the workshop layout.

Lervad offers to assist in the planning of design studios and workshops based on room drawings provided by the school.

Scale drawings with layout proposals as well as specifications and costing of Lervad equipment is provided by Lervad free of charge and without obligation.

As guidance please refer to the general planning recommendations below.

NB! Safety distances provided by machinery suppliers should always be observed.



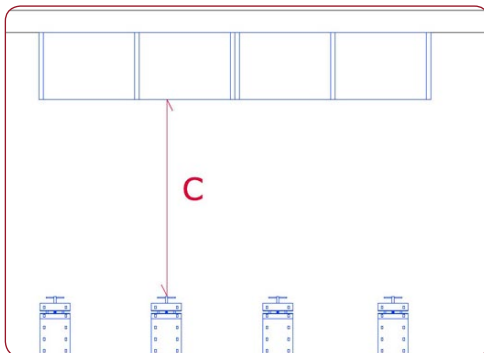
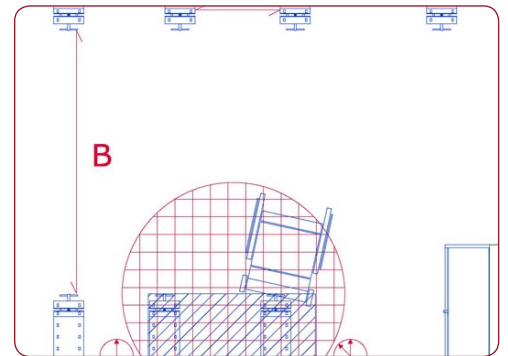
A: Between end vice and opposite wall or roller shutter cabinet

Min. 1200 mm.

B: Between end vice and opposing workplace or between end vice and cabinet with hinged doors

Min. 1800 mm.

Remember to allocate additional room for special needs when required.



C: Between end vice and opposing machinery or benching

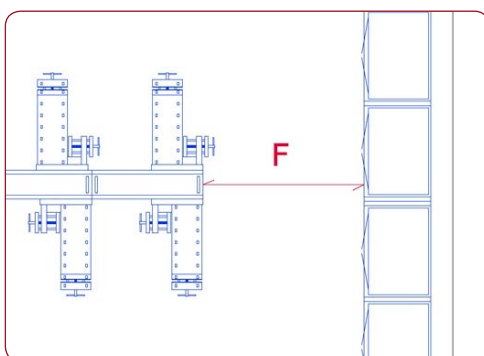
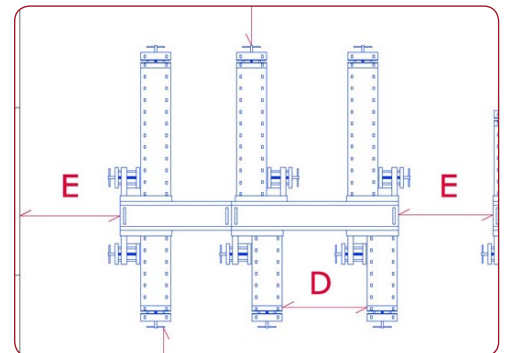
Min. 1500 mm.

D: Between benches

Min. 700 mm.

E: Between end of group and wall or between opposing ends of assembly wells

Min. 750 mm.



F: Between end of group and opposing benching or machinery

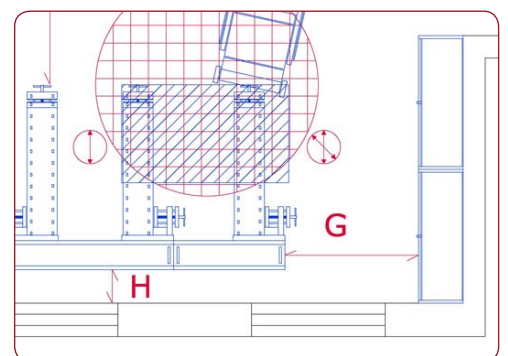
Min. 1200 mm.

G: Between end of assembly well and roller shutter cabinet

Min. 1000 mm.

H: Between assembly well of single sided group and wall

Min. 300 mm.





Furniture for
design studios
and
workshops



**When you want it right,
you must choose right!**
The teaching environment is
important for you -
and for your students.
Do not compromise!
Get your personal
catalogue now!

LERVAD
Lervad (U.K.) Ltd.
823 Salisbury House, 29 Finsbury Circus
London EC2M 5QQ
Tel: 020 7374 8440 - Fax: 020 7374 8438
E-mail: Sales@Lervad.com - www.Lervad.com

Distributor: